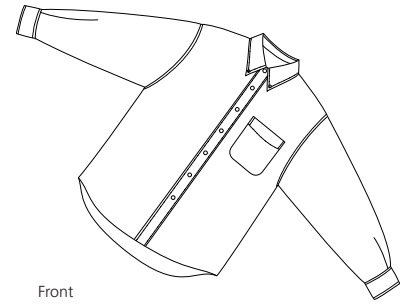
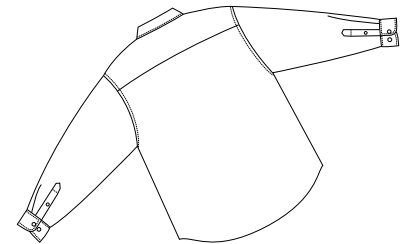


# Long Sleeve Value Denim Shirt

PORT & COMPANY®



Front



Back

## SP10

- \* 6.5-ounce \* 100% cotton denim \* Garment washed \* Generous cut
- \* Double-needle stitched \* Tuck-in tail \* Button-down collar \* Horn tone buttons
- \* Patch pocket \* With button-through sleeve plackets \* Adjustable cuffs

### Care Instructions:



Machine wash cold with like colors.  
Do not bleach.  
Tumble dry low.  
Warm iron if necessary.

### Finished Measurements in Inches

Size	XS	S	M	L	XL	2XL	3XL	4XL	5XL	6XL
Width	20	21.5	23	24.5	26	27.5	29	30.5	35.5	37
Length	26.5	28.5	32	32.5	34	34.5	35.5	36	36.5	37
Sleeve	31	32.5	34.5	35.5	37	38	39	40	41	42
Collar	15.5	16	16.5	17	17.5	18	18.5	19	19.5	20
Pocket	5x5.5	5x5.5	5.25x6	5.25x6	5.25x6	5.25x6	5.5x6.25	5.5x6.25	5.5x6.25	5.5x6.25

Chest width measured 1" below arm hole. Body length measured from back neck seam to hem.  
Sleeve length measured from center back seam to hem. Collar measured by circumference. Pocket WxH.

### Colors

	Faded Blue
	Ink Blue

### Please Note:

Colors shown are approximate and for reference only. For closest match see PMS colors, or for exact match, returnable samples and grommeted samples are available.

\*Due to a special washing process, colors may vary

### Color Chart

Color	Faded Blue	Ink Blue
Textile PMS	No Match	No Match
General PMS	No Match	No Match